



***Y PWYLLGOR
CYNLLUNIO***

**PLANNING
COMMITTEE**

27 TACHWEDD 2018

27 NOVEMBER 2018

***RHANBARTH Y
GORLLEWIN***

**AREA
WEST**



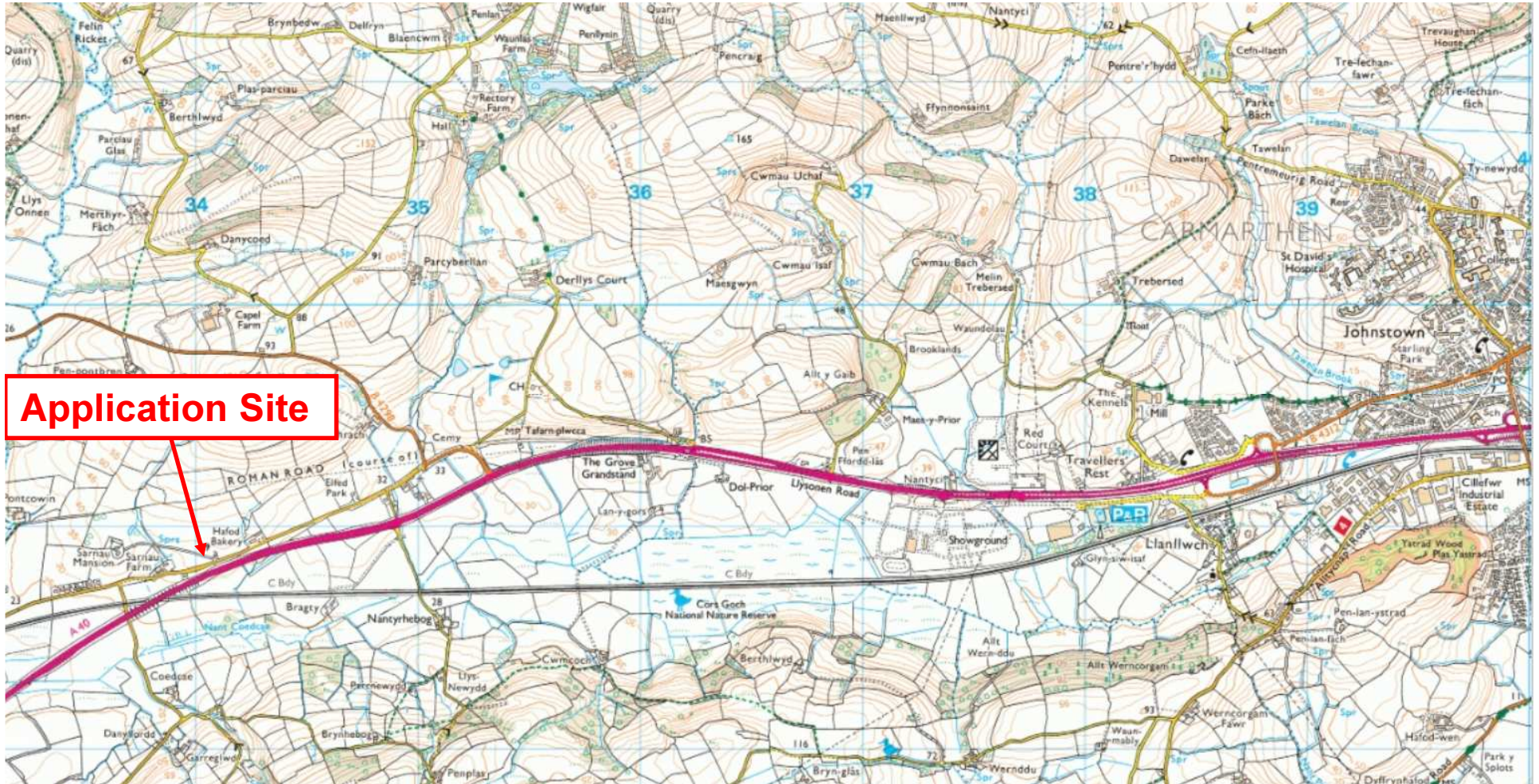
***CEISIADAU YR ARGYMHELLIR EU
BOD YN CAEL EU GWRTHOD***

**APPLICATIONS RECOMMENDED
FOR REFUSAL**



W/35898

W/35898



W/35898



W/35898



W/35898



W/35898



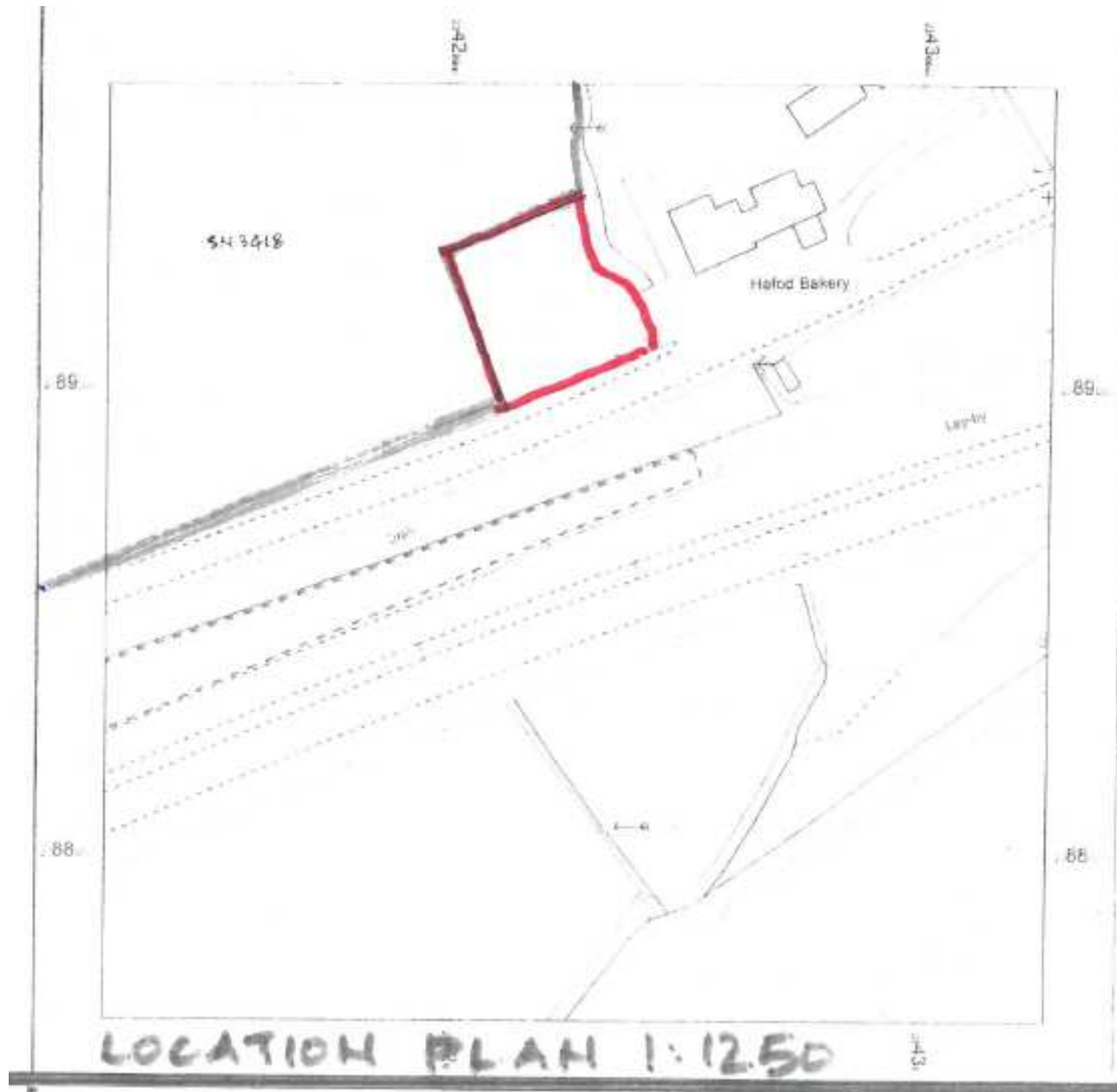
W/35898



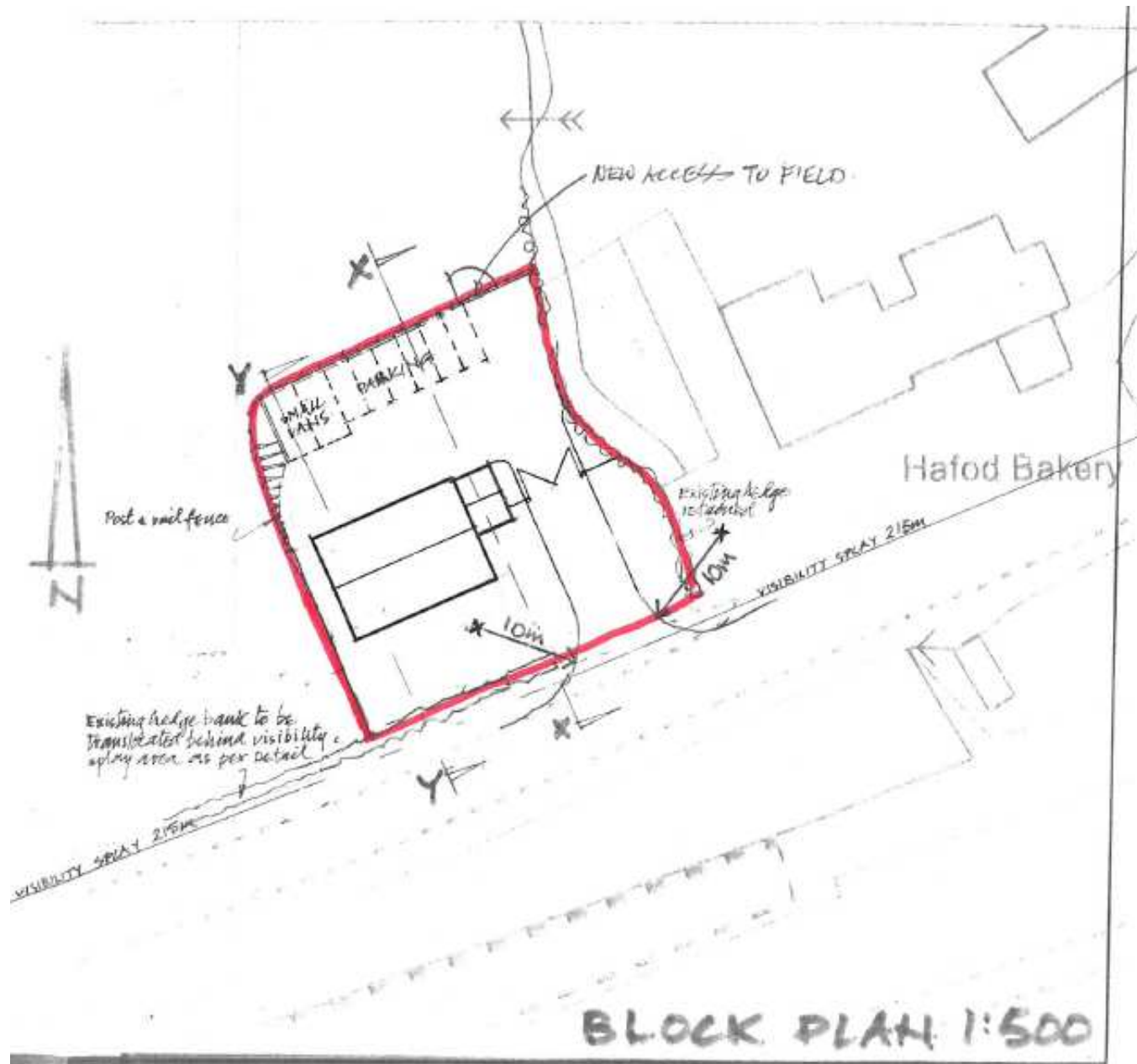
W/35898



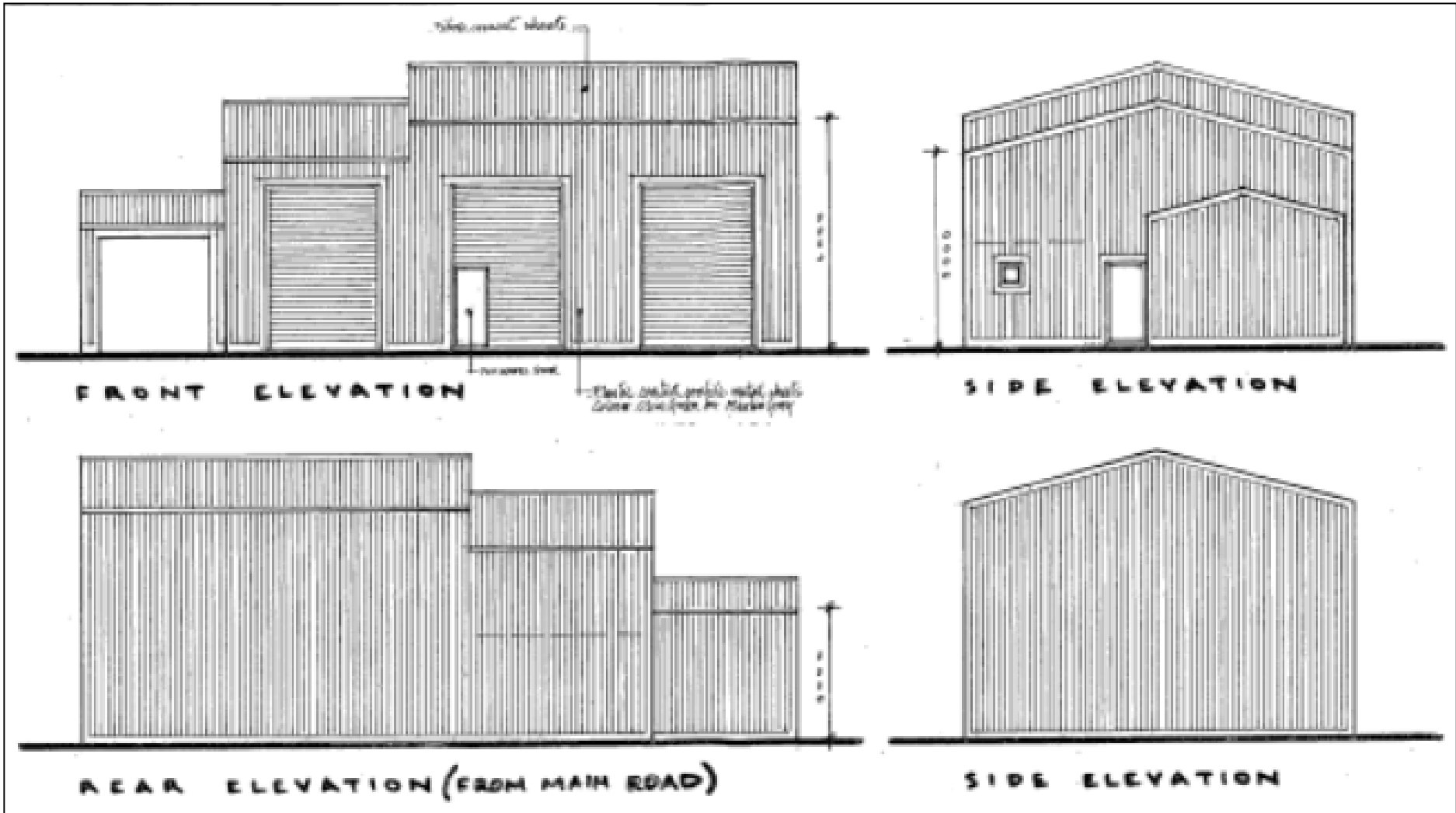
W/35898



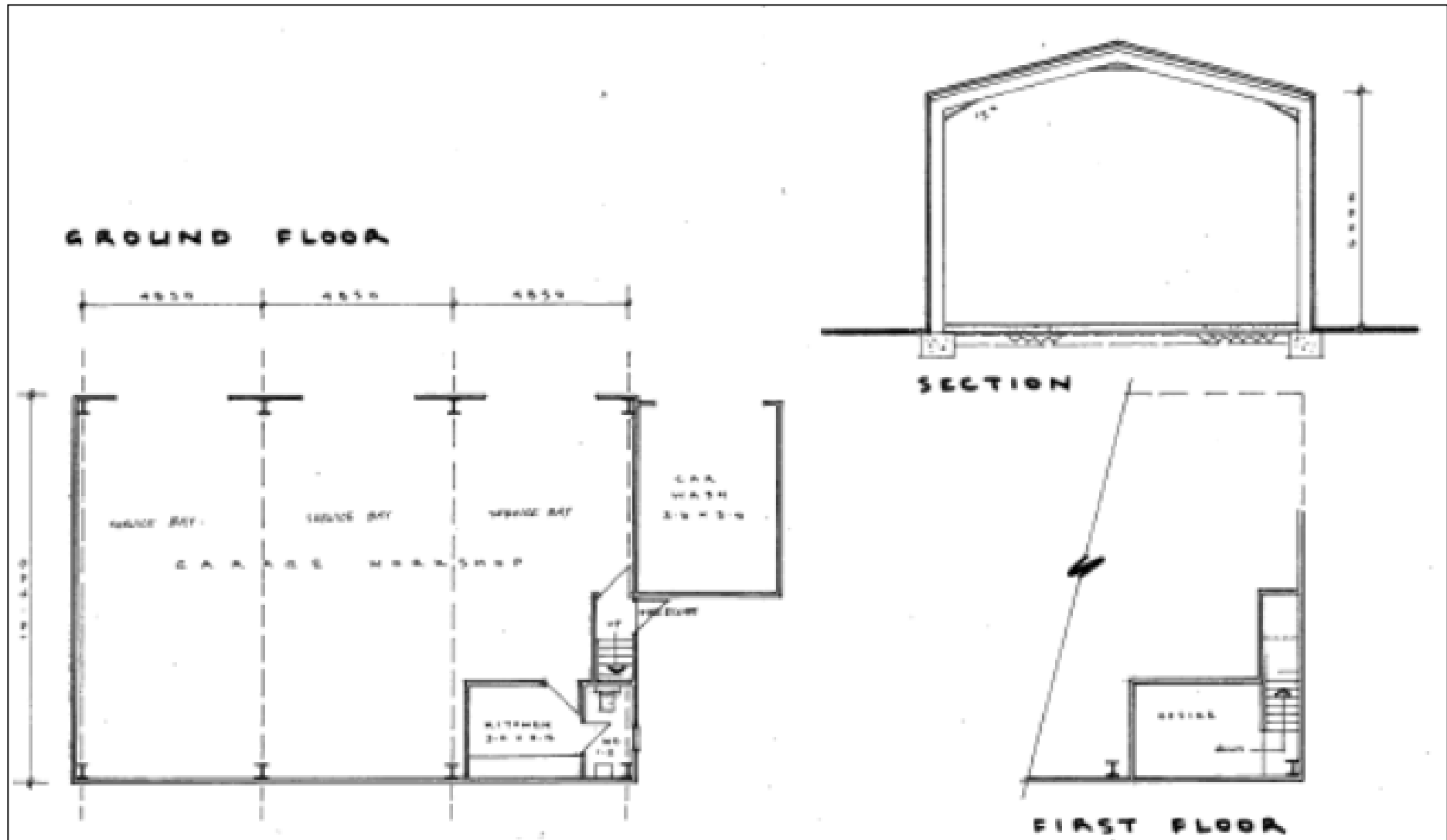
W/35898



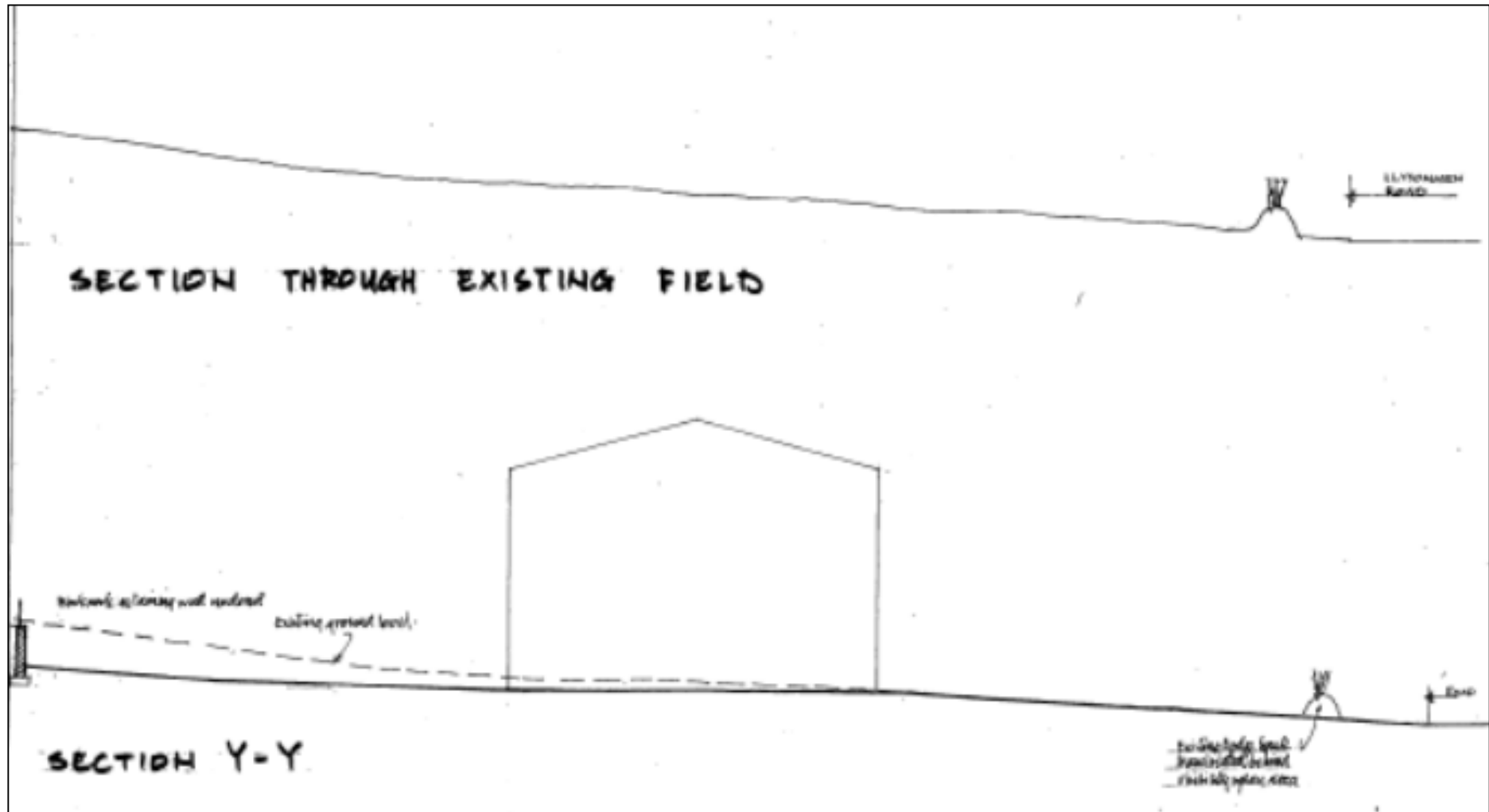
W/35898



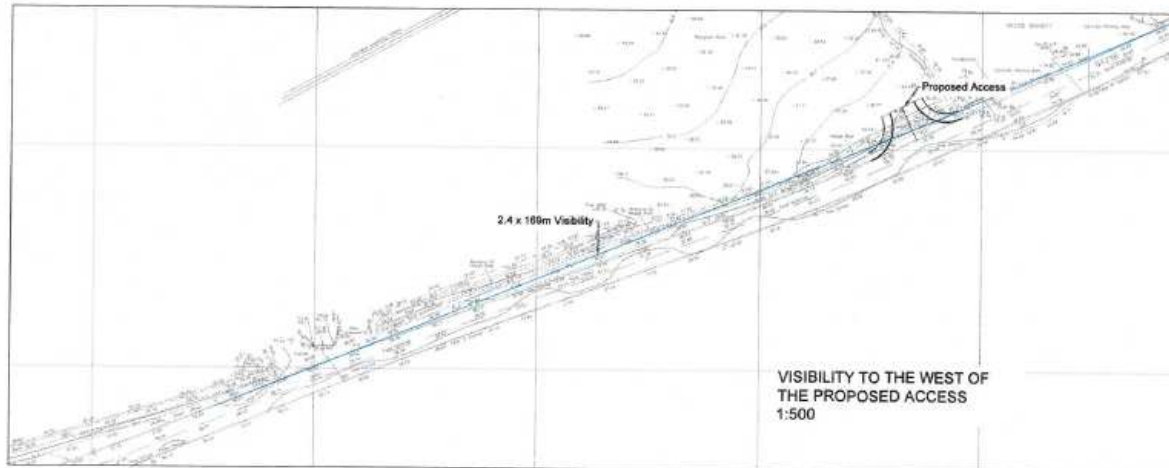
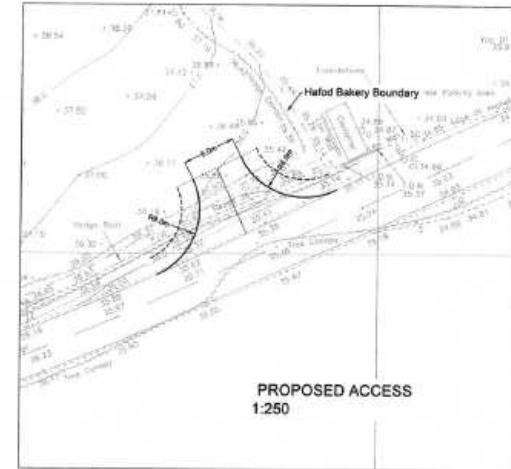
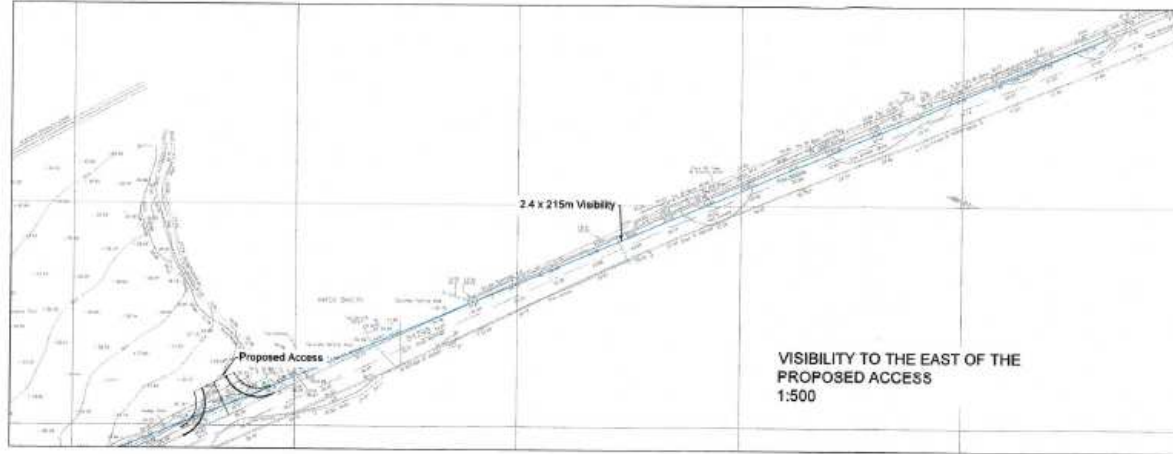
W/35898



W/35898



W/35898



NOTE
Proposed access location as agreed with Carmarthenshire County Council Officers during site meeting 17th July 2016

A	First Issue	04-04-18
 Proffysod o Trwmidieth Highway & Transportation Ty Fawr, Cwm, Llanelli SA71 5J E-mail: info@acstro.com www.acstro.com Tel: 01552 83402		
LAND ADJACENT TO HAFOD BAKERY		
PROPOSED ACCESS		
1112	603	A
	1:500	© A1